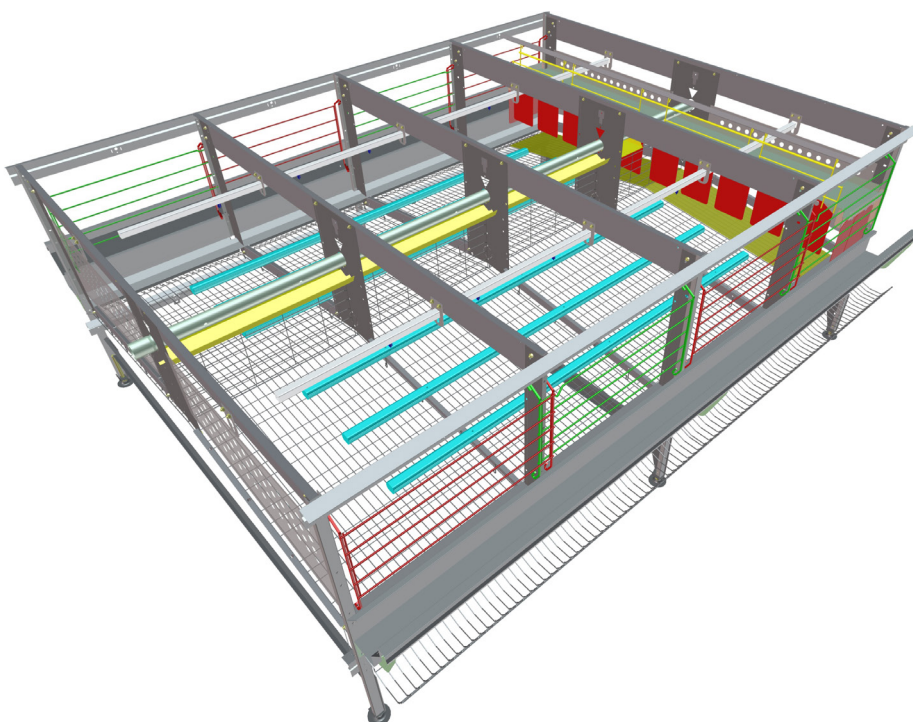
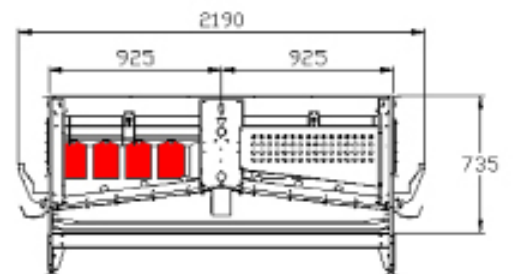
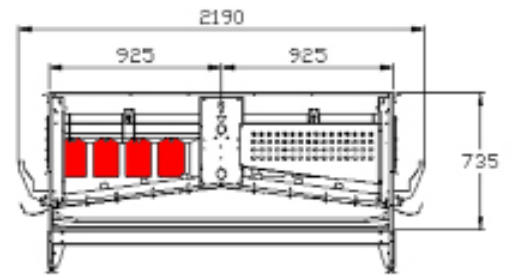


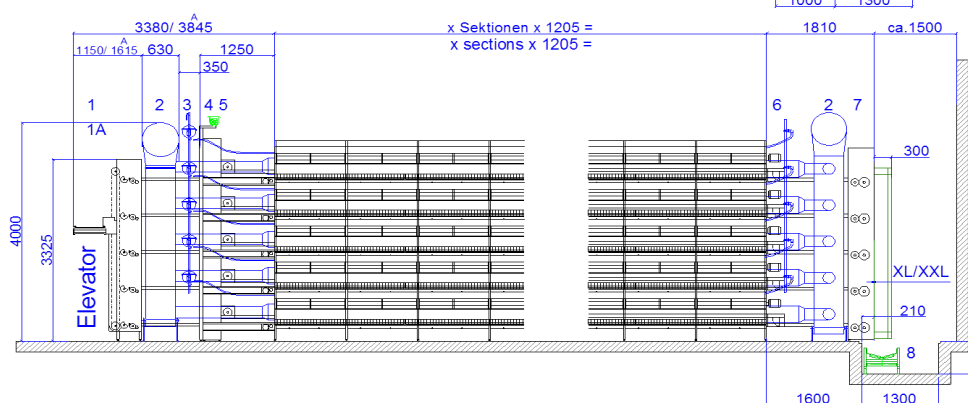
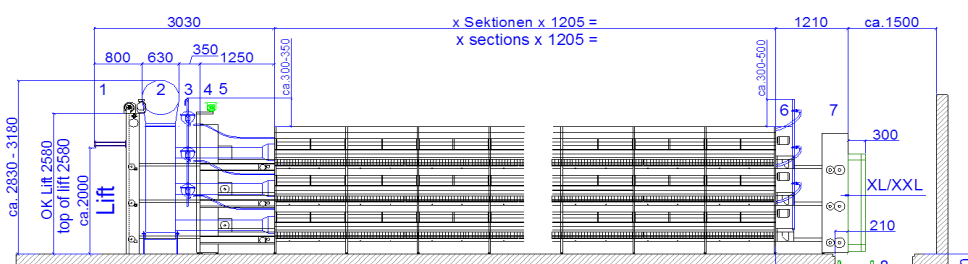
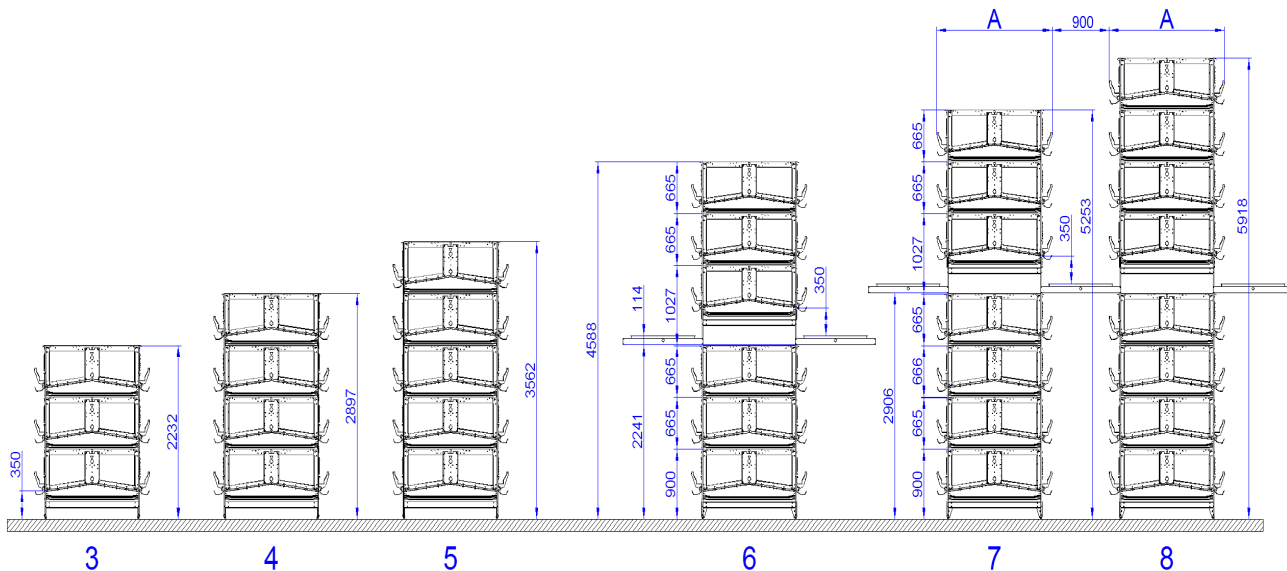
# Euro SO 33



## Euro SO 33

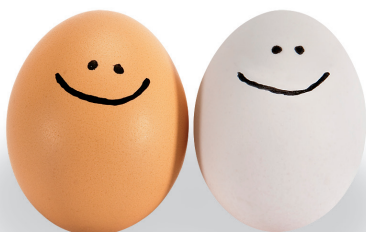
Compartment length:	241 cm
Compartment depth:	925 mm
Row width:	2,190 mm
Tier height:	735 mm
Birds per compartment:	33
Surface per bird:	753 cm <sup>2</sup>
Perch per bird:	15 cm
Scratching area:	on nest
Extras:	Automatic filling Automatic doors for scratching area





1. Egg collection - liftsystem elevator
- 1A. Elevator with simultaneous transfer
2. Feed chain drive
3. Watering System
4. Air channel
5. Reverse station
6. Reverse station feed chain
7. Drive Station
8. Cross conveyor belt

1. Lift élévateur
- 1A. Elévateur transfert simultané
2. Entraînement chaîne
3. Abreuvement
4. Gaine à séchage
5. Retour tapis à fiente
6. Retour chaîne d'alimentation
7. Entraînement tapis à fiente
8. Convoyeur transversal



Made in Germany.

Hellmann Poultry GmbH & Co. KG · Kopernikusstr. 6–10 · 49377 Vechta  
 P.O. BOX 1232 · 49361 Vechta · Germany · Phone +49 4441 9259-0  
 Fax +49 4441 9259-50 · www.hellmannpoultry.de