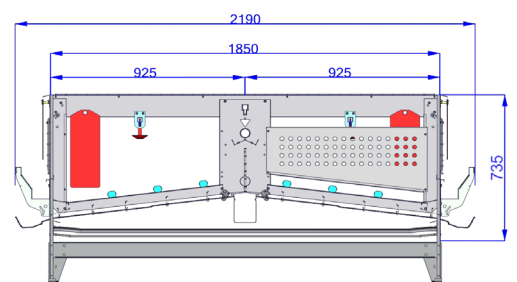
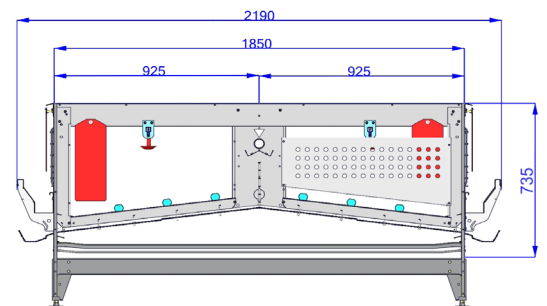
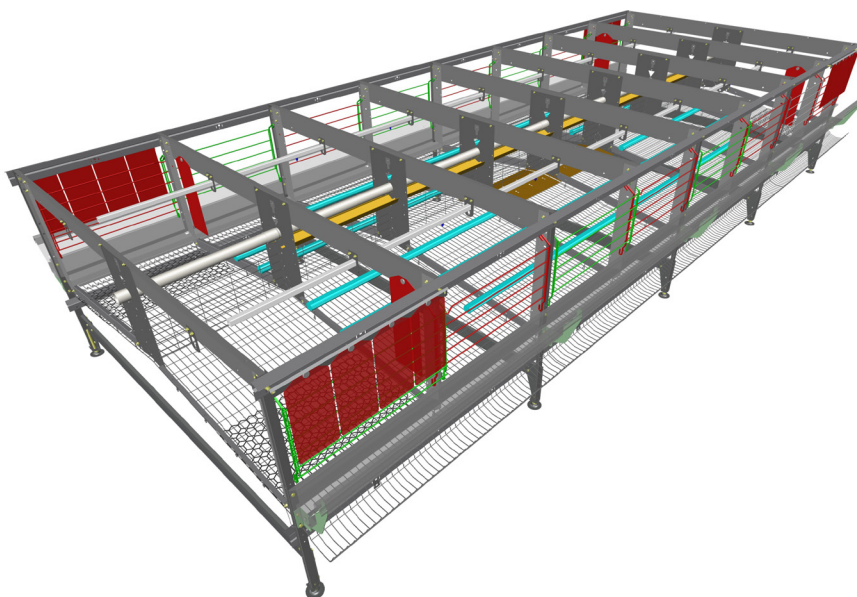
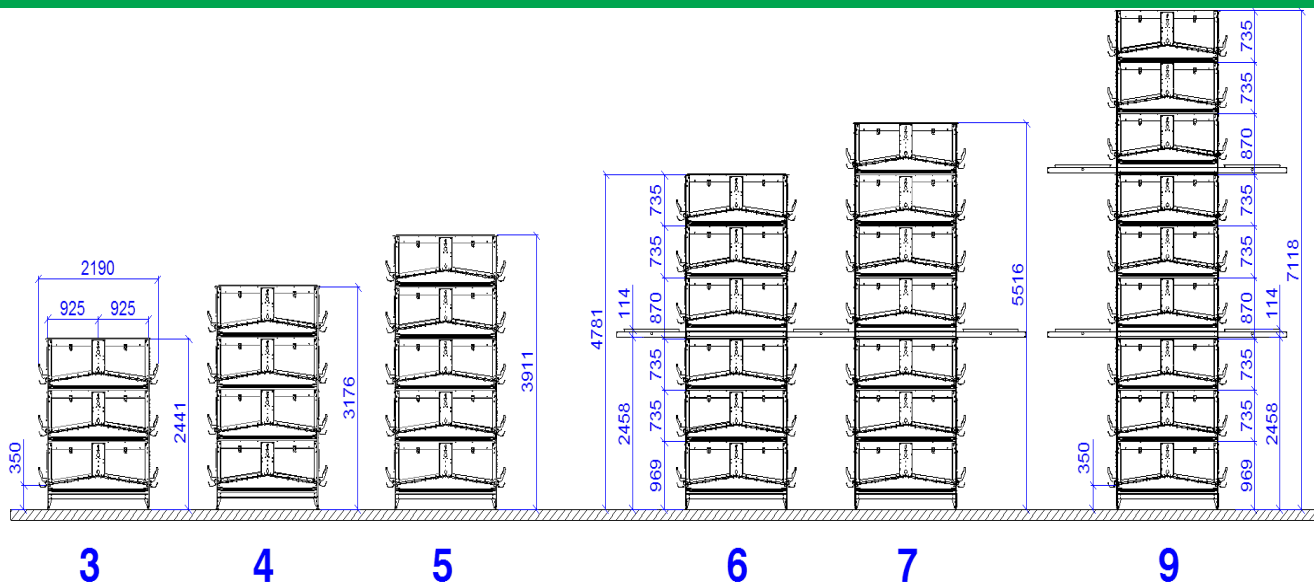


## Euro SU 59



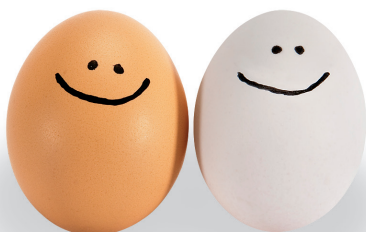
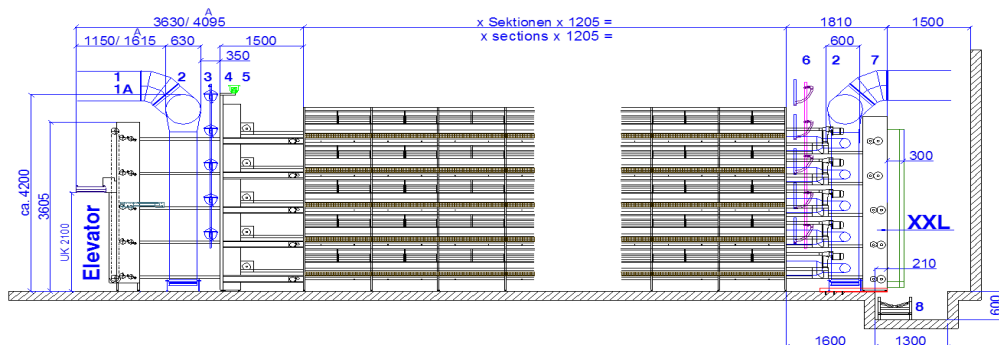
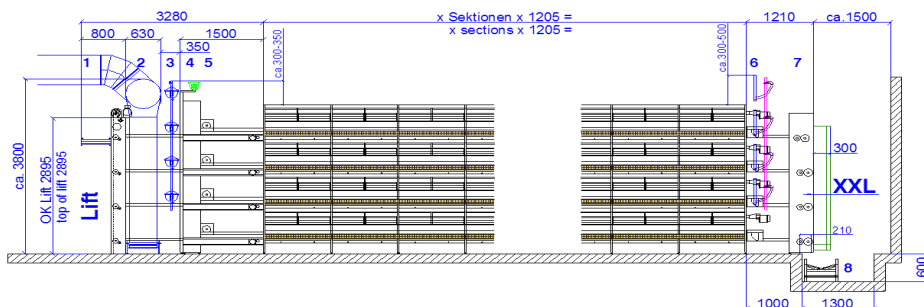
- Compartment length: 482 cm
- Compartment depth: 925 mm
- Row width: 2190 mm
- Tier height: 735 mm
- Birds per compartment: 59
- Surface per bird: 755,68 cm<sup>2</sup>
- Nest position: at the front
- Perch per bird: 150 mm
- Feeding: standard feed chain and supplementary auger feeding
- Extras: Scratching mat  
Automatic filling for scratching mat





1. Egg collection - liftsystem elevator
- 1A. Elevator with simultaneous transfer
2. Air channel
3. Watering System
4. Feed chain drive
5. Reverse station
6. Reverse station feed chain
7. Drive Station
8. Cross conveyor belt

1. Lift élévateur
- 1A. Elévateur transfert simultané
2. Gaine à séchage
3. Abreuvement
4. Entraînement chaîne
5. Retour tapis à fiente
6. Retour chaîne d'alimentation
7. Entraînement tapis à fiente
8. Convoyeur transversal



Made in Germany.

Hellmann Poultry GmbH & Co. KG · Kopernikusstr. 6–10 · 49377 Vechta  
 P.O. BOX 1232 · 49361 Vechta · Germany · Phone +49 4441 9259-0  
 Fax +49 4441 9259-50 · www.hellmannpoultry.com